



## 7.1.7 The institution has disabled- friendly, barrier free environment

Aditya College of Engineering ensures that the persons with disability enjoy the right to equality, life with dignity and respect for his or her integrity with others. The institute takes steps to utilize the capacity of persons with disability by providing appropriate environment. The institute shall take necessary steps to ensure reasonable accommodation for persons with disability. Aditya College of Engineering takes all measures to protect persons with disabilities against abuse, violence, and exploitation. The following facilities are provided for the disabled persons:

- Ramps with railings at the entrance of each building
- Lifts are provided in two buildings of the campus and provided provision in remaining buildings.
- Provided wheelchair facilities in all the buildings.
- Human assistance is provided and the sign boards are displayed with phone numbers for contacting the authority concerned at the main gate.
- The institute makes provisions of scribes for the needy to provide appropriate support to any person with benchmark disability. Such candidates may apply to the authority as per the norms of the affiliating University, with a request for providing high support.
- Use of battery operated vehicles for transportation.
- The institute maintains tactile paths and display boards.
- Designated parking places are also specified for disabled people.
- Availability of barrier free wash/ rest rooms facilities (Every building at ground floor).
- The institute follows the Standards for Information and Communication Technology as given in the Rights of Persons with Disabilities Rules, 2017, such as-
  - All contents available in audio, print and electronic media are in accessible format.
  - Braille software installed in 30 computers in Lab (Freeware downloaded from <https://sourceforge.net/projects/brailles/>)
  - Some other screening software also maintained in the labs which is freeware. (downloaded from <https://www.nvaccess.org/>, <https://www.satogo.com/en/>)



# ADITYA COLLEGE OF ENGINEERING

Approved by AICTE, Affiliated to JNTUK & Accredited by NAAC

Recognized by UGC under section 2(f) of UGC Act 1956

Aditya Nagar, ADB Road, Surampalem - 533 437, E.G.Dist., Ph: 99631 76662.

Built environment with ramps/lifts with easy access to classrooms	Disabled -friendly wash rooms	Signage including tactile paths, lights, display boards and signposts	Assistive technology and facilities for persons with disabilities ( <i>Divyangjan</i> ), accessible website, screen-reading software, mechanized equipment	Provision for enquiry and information: Human assistance, reader, scribe, soft copies of reading material, screen reading
Yes	Yes	Yes	Yes	Yes

S.No	Proof of Documents
1	Equal opportunity policy for persons with disabilities
2	Built environment with ramps/lifts with easy access to classrooms
3	Disabled-friendly washrooms
4	Signage including tactile paths, lights, display boards and signposts
5	Assistive technology and facilities for persons with disabilities ( <i>Divyangjan</i> ), accessible website, screen-reading software, mechanized equipment
6	Provision for enquiry and information: Human assistance, reader, scribe, soft copies of reading material, screen reading



PRINCIPAL

PRINCIPAL  
Aditya College of Engineering  
SURAMPALAM-533 437





# ADITYA COLLEGE OF ENGINEERING

Approved by AICTE, Affiliated to JNTUK & Accredited by NAAC

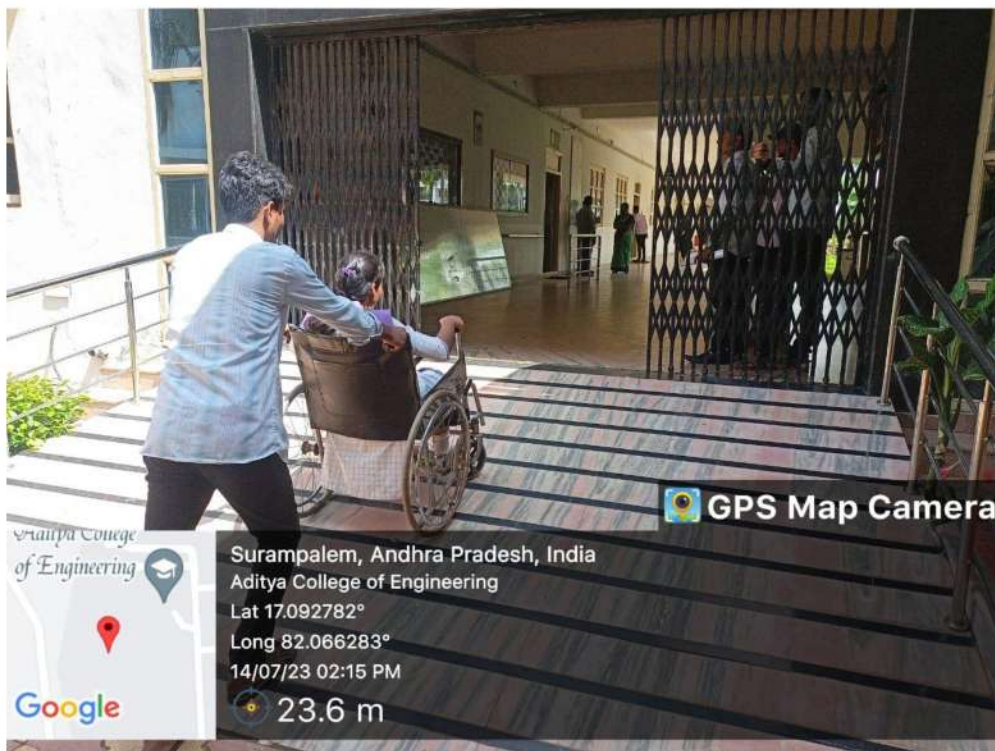
Recognized by UGC under section 2(f) of UGC Act 1956

Aditya Nagar, ADB Road, Surampalem - 533 437, E.G.Dist., Ph: 99631 76662.

## Ramps/Lifts for easy access to classrooms



### Ramp for Wheelchair



### Wheel chair assistance for students



# ADITYA COLLEGE OF ENGINEERING

Approved by AICTE, Affiliated to JNTUK & Accredited by NAAC

Recognized by UGC under section 2(f) of UGC Act 1956

Aditya Nagar, ADB Road, Surampalem - 533 437, E.G.Dist., Ph: 99631 76662.



**Ramp to Newton Bhavan**



**Wheel chair access in-to lift**



**PRINCIPAL**

PRINCIPAL  
Aditya College of Engineering  
SURAMPALAM-533 437





# ADITYA COLLEGE OF ENGINEERING

Approved by AICTE, Affiliated to JNTUK & Accredited by NAAC

Recognized by UGC under section 2(f) of UGC Act 1956

Aditya Nagar, ADB Road, Surampalem - 533 437, E.G.Dist., Ph: 99631 76662.



**Lift in James Watt Bhavan**



**Wheel chair facility at Reception**



**PRINCIPAL**

PRINCIPAL  
Aditya College of Engineering  
SURAMPALAM-533 437



# ADITYA COLLEGE OF ENGINEERING

Approved by AICTE, Affiliated to JNTUK & Accredited by NAAC

Recognized by UGC under section 2(f) of UGC Act 1956

Aditya Nagar, ADB Road, Surampalem - 533 437, E.G.Dist., Ph: 99631 76662.



**Wheel chair disabled- friendly**



**Wheel chair assistance for students**





# ADITYA COLLEGE OF ENGINEERING

Approved by AICTE, Affiliated to JNTUK & Accredited by NAAC

Recognized by UGC under section 2(f) of UGC Act 1956

Aditya Nagar, ADB Road, Surampalem - 533 437, E.G.Dist., Ph: 99631 76662.



**Ramps for wheel chair in washrooms**



**Disabled- Friendly Washbasins**



*Handwritten signature*

**PRINCIPAL**

PRINCIPAL  
Aditya College of Engineering  
SURAMPALAM-533 437



# ADITYA COLLEGE OF ENGINEERING

Approved by AICTE, Affiliated to JNTUK & Accredited by NAAC

Recognized by UGC under section 2(f) of UGC Act 1956

Aditya Nagar, ADB Road, Surampalem - 533 437, E.G.Dist., Ph: 99631 76662.



**Disabled- Friendly Washrooms with Railings**



**Physically challenged vehicles sign Board**



*Handwritten signature*

**PRINCIPAL**

PRINCIPAL  
Aditya College of Engineering  
SURAMPALAM-533 437





# ADITYA COLLEGE OF ENGINEERING

Approved by AICTE, Affiliated to JNTUK & Accredited by NAAC

Recognized by UGC under section 2(f) of UGC Act 1956

Aditya Nagar, ADB Road, Surampalem - 533 437, E.G.Dist., Ph: 99631 76662.



## Physically challenged vehicle Enquiry Board



PRINCIPAL

PRINCIPAL  
Aditya College of Engineering  
SURAMPALAM-533 437



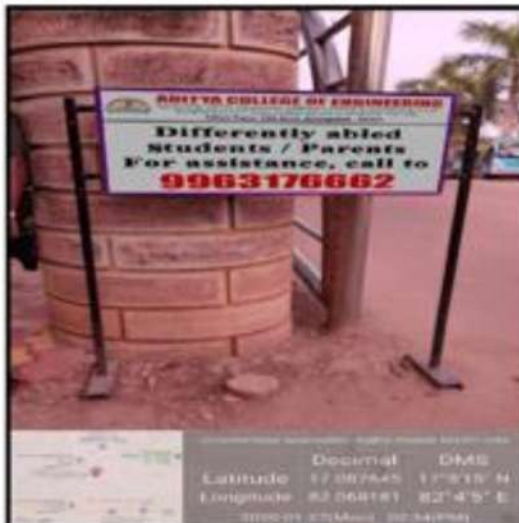
# ADITYA COLLEGE OF ENGINEERING

Approved by AICTE, Affiliated to JNTUK & Accredited by NAAC

Recognized by UGC under section 2(f) of UGC Act 1956

Aditya Nagar, ADB Road, Surampalem - 533 437, E.G.Dist., Ph: 99631 76662.

## Signage including tactile paths, lights, display boards and signposts



PRINCIPAL

PRINCIPAL  
Aditya College of Engineering  
SURAMPALAM-533 437





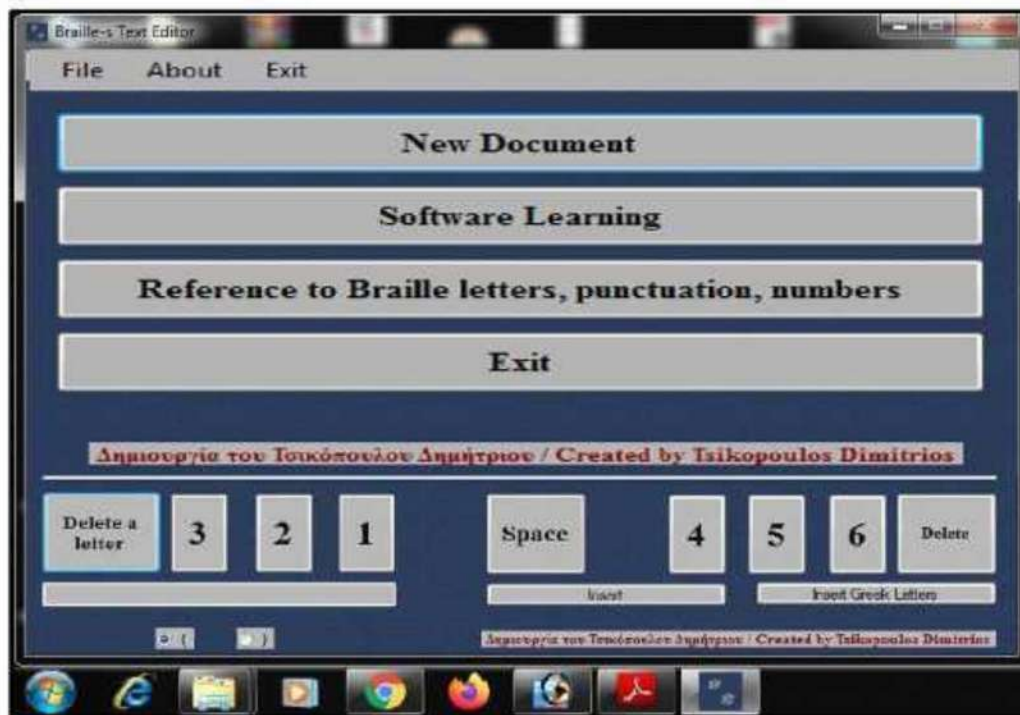
# ADITYA COLLEGE OF ENGINEERING

Approved by AICTE, Affiliated to JNTUK & Accredited by NAAC

Recognized by UGC under section 2(f) of UGC Act 1956

Aditya Nagar, ADB Road, Surampalem - 533 437, E.G.Dist., Ph: 99631 76662.

## BRAILLE SOFTWARE



## Accessible website for Divyangjan



## Screen Reading Software



# ADITYA COLLEGE OF ENGINEERING

Approved by AICTE, Affiliated to JNTUK & Accredited by NAAC

Recognized by UGC under section 2(f) of UGC Act 1956

Aditya Nagar, ADB Road, Surampalem - 533 437, E.G.Dist., Ph: 99631 76662.

UNIT-1.pdf - Adobe Reader

File Edit View Window Help

Tools Sign Comment

Sign In

Export PDF

Create PDF

Send Files

Adobe Send has replaced SendNow

Adobe Send is replacing Adobe SendNow. Update to the latest version of Reader to use the new service.

Select File:

UNIT-1.pdf

1 file / 1.83 MB

To...

Type in email address

Send Link

Store Files

### ARCH MASONRY CALCULATION

The quantity of masonry work in arch is calculated by multiplying the mean length of arch by breadth of wall and by the thickness of arch.

**CASE:1 Segmental arch with span and angle given.**

Arch of span  $S$  subtending an angle  $\theta$  at the centre

$S$ = span,  $\theta$ = angle at centre,  $r$ = radius,  $r_m$ = mean radius,

$L_m$ = mean length of a

Welcome to NVDA

**Welcome to NVDA!**

Most commands for controlling NVDA require you to hold down the NVDA key while pressing other keys. By default, the numpad Insert and main Insert keys may both be used as the NVDA key. You can also configure NVDA to use the CapsLock as the NVDA key. Press NVDA+n at any time to activate the NVDA menu. From this menu, you can configure NVDA, get help and access other NVDA functions.

Options

Keyboard layout: desktop

☐ Use CapsLock as an NVDA modifier key

☐ Start NVDA after I sign in

☒ Show this dialog when NVDA starts

OK

$\sin \frac{\theta}{2} = \frac{S/2}{r}$ ,  $\therefore r = \frac{S/2}{\sin \frac{\theta}{2}}$

$r_m = r + \frac{t}{2}$

$\frac{L_m}{2\pi r_m} = \frac{\theta}{360}$ ,  $\therefore L_m = \frac{2\pi r_m \theta}{360}$

Quantity of arch masonry

**1. An arch of 2.5m span, breadth of wall is 40cm**

**Sol: Given**

Span  $S = 2.5$  m, Angle  $\theta = 80^\circ$ , Thickness  $t = 30$  cm, Breadth  $B = 40$  cm

$r = \frac{S}{2} \times \frac{1}{\sin \frac{\theta}{2}}$

33°C Mostly s...

ENG 16:14

NVDA Software for DIVYANGJAN



*ADITYA*

PRINCIPAL

PRINCIPAL  
Aditya College of Engineering  
SURAMPALAM-533 437